



**SMD LED**  
**Product Data Sheet**  
LTST-E143EGSW

Spec No. :DS35-2021-0006  
Effective Date: 02/18/2021  
Revision: -

**LITE-ON DCC**

**RELEASE**

**BNS-OD-FC001/A4**

## SMD LED LTST-E143EGSW

### 1. Description

SMD LEDs from Lite-On are available in miniature sizes and special configurations for automated PC board assembly and space-sensitive applications. These SMD LEDs are suitable for use in a wide variety of electronic equipment, including cordless and cellular phones, notebook computers, network systems, home appliances, and indoor signboard applications.

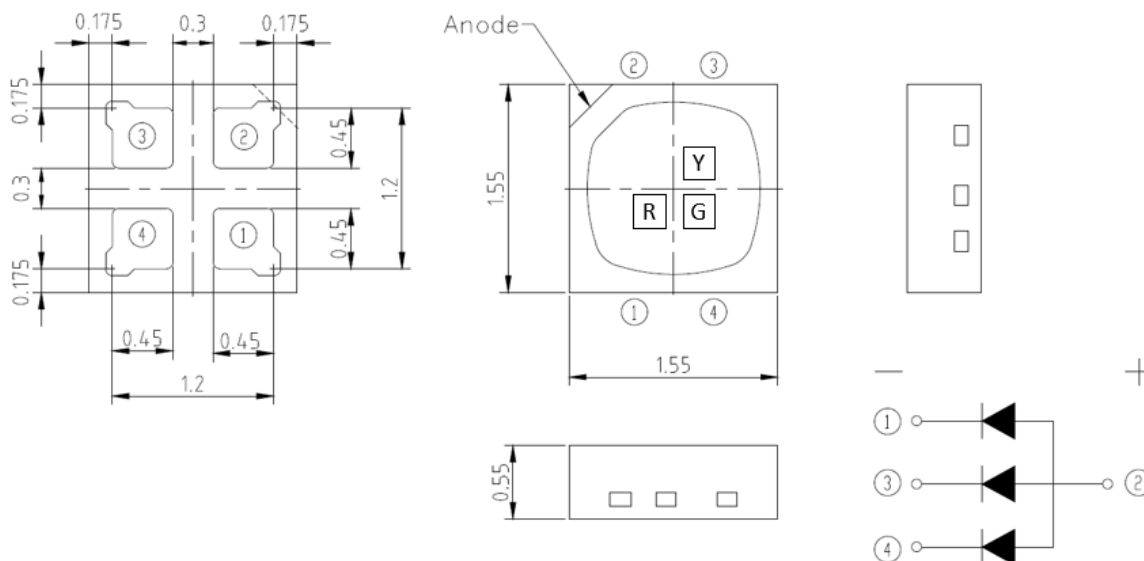
#### 1.1 Features

- Meet ROHS
- Package in 8mm tape on 7" diameter reels
- EIA STD package
- I.C. compatible
- Compatible with automatic placement equipment
- Compatible with infrared reflow solder process
- Preconditioning: accelerate to JEDEC level 3

#### 1.2 Applications

- Telecommunication, Office automation, home appliances, industrial equipment
- Status indicator
- Signal and Symbol Luminary
- Front panel backlighting

### 2. Package Dimensions



Part No.	Lens Color	Source Color	Pin Assignment
LTST-E143EGSW	Diffused Lens	AllInGaP Red	2, 1
		InGaN Green	2, 4
		AllInGaP Yellow	2, 3

#### Notes:

1. All dimensions are in millimeters.
2. Tolerance is  $\pm 0.2$  mm (.008") unless otherwise noted.

## SMD LED LTST-E143EGSW

### 3. Rating and Characteristics

#### 3.1 Absolute Maximum Ratings at Ta=25°C

Parameter	LTST-E143EGSW			Unit
	Red	Green	Yellow	
Power Dissipation	75	76	72	mW
Peak Forward Current (1/10 Duty Cycle, 0.1ms Pulse Width)	80	80	80	mA
DC Forward Current	30	20	30	mA
Operating Temperature Range	-40°C to + 100°C			
Storage Temperature Range	-40°C to + 100°C			

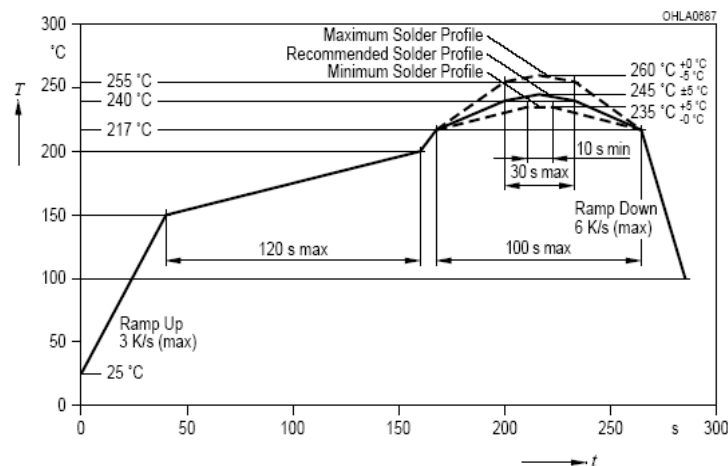
#### 3.2 Thermal Characteristics at Ta=25°C

Parameter	LTST-E143EGSW	Unit
Max. Junction Temperature (°C)	125	°C
Typ. Thermal Resistance-junction to ambient ( R <sub>th ja</sub> ) <sup>Note</sup>	100	°C/W
Typ. Thermal Resistance - junction to solder pad ( R <sub>th jt</sub> ) <sup>Note</sup>	60	°C/W

**Notes:** Substrate: FR4 (t=1.6mm) / Pattern Size : 16mm<sup>2</sup>

#### 3.3 Suggest IR Reflow Condition for Pb Free Process:

IR-Reflow Soldering Profile for lead free soldering (Acc. to J-STD-020B)



## SMD LED LTST-E143EGSW

### 3.4 Electrical / Optical Characteristics at Ta=25°C

Parameter	Symbol	LTST-E143EGSW				Unit.	Test Condition
			Red	Green	Yellow		
Luminous Intensity	I <sub>v</sub>	Min.	140	710	140	mcd	R: I <sub>F</sub> = 20mA G: I <sub>F</sub> = 20mA Y: I <sub>F</sub> = 20mA Note 1
		Max.	350	1540	390		
Viewing Angle	2θ <sub>1/2</sub>	Typ.	120			deg	Note 2
Dominant Wavelength	λ <sub>d</sub>	Min.	615	518	586	nm	R: I <sub>F</sub> = 20mA G: I <sub>F</sub> = 20mA Y: I <sub>F</sub> = 20mA Note 3
		Max.	630	528	596		
Forward Voltage	V <sub>F</sub>	Min.	1.7	2.8	1.7	V	R: I <sub>F</sub> = 20mA G: I <sub>F</sub> = 20mA Y: I <sub>F</sub> = 20mA Note 4
		Max.	2.5	3.8	2.5		
Spectral Line Half-Width	Δλ	Typ.	15	25	15	nm	-
Reverse Current	I <sub>R</sub>	Max.	10			μA	VR = 5V Note 5

#### Notes:

1. Luminous intensity is measured with a light sensor and filter combination that approximates the CIE eye-response curve
2. θ<sub>1/2</sub> is the off-axis angle at which the luminous intensity is half the axial luminous intensity.
3. The dominant wavelength, λ<sub>d</sub> is derived from the CIE chromaticity diagram and represents the single wavelength which defines the color of the device. Dominant Wavelength Tolerance is +/- 1nm.
4. Forward Voltage Tolerance is +/- 0.1 volt.
5. Reverse Voltage (VR) condition is applied to I<sub>R</sub> test only. The device is not designed for reverse operation.

**SMD LED  
LTST-E143EGSW**

**4. Bin Rank**

**4.1 IV Rank**

Luminous Intensity		Color : <u>Red</u> , Unit : mcd @20mA	
Bin Code	Min.	Max.	
R1	140	190	
R2	190	260	
R3	260	350	

Tolerance on each Intensity bin is +/-11%

Luminous Intensity		Color : <u>Green</u> , Unit : mcd @20mA	
Bin Code	Min.	Max.	
G1	710	910	
G2	910	1185	
G3	1185	1540	

Tolerance on each Intensity bin is +/-11%

Luminous Intensity		Color : <u>Yellow</u> , Unit : mcd @20mA	
Bin Code	Min.	Max.	
Y1	140	180	
Y2	180	230	
Y3	230	300	
Y4	300	390	

Tolerance on each Intensity bin is +/-11%

## SMD LED LTST-E143EGSW

### 4.2 Dominant Wavelength Rank

Dominant Wavelength		Color : <u>Red</u> , Unit : nm @ 20mA	
Bin Code	Min.	Max.	
RA	615	630	

Tolerance for each Dominate Wavelength bin is +/- 1nm

Dominant Wavelength		Color : <u>Green</u> , Unit : nm @ 20mA	
Bin Code	Min.	Max.	
GA	518	523	
GB	523	528	

Tolerance for each Dominate Wavelength bin is +/- 1nm

Dominant Wavelength		Color : <u>Yellow</u> , Unit : nm @ 20mA	
Bin Code	Min.	Max.	
YA	586	591	
YB	591	596	

Tolerance for each Dominate Wavelength bin is +/- 1nm

## SMD LED LTST-E143EGSW

◆ Bin Code on Tag Cross Table

◆ IV Rank

Luminous Intensity		Unit : mcd @ 20mA				
Bin Code On Tag	Red		Green		Yellow	
	Code	Range	Code	Range	Code	Range
A1	R1	140-190	G1	710-910	Y1	140-180
A2					Y2	180-230
A3					Y3	230-300
A4					Y4	300-390
A5			G2	910-1185	Y1	140-180
A6					Y2	180-230
A7					Y3	230-300
A8					Y4	300-390
A9			G3	1185-1540	Y1	140-180
A10					Y2	180-230
A11					Y3	230-300
A12					Y4	300-390
B1	R2	190-260	G1	710-910	Y1	140-180
B2					Y2	180-230
B3					Y3	230-300
B4					Y4	300-390
B5			G2	910-1185	Y1	140-180
B6					Y2	180-230
B7					Y3	230-300
B8					Y4	300-390
B9			G3	1185-1540	Y1	140-180
B10					Y2	180-230
B11					Y3	230-300
B12					Y4	300-390

## SMD LED LTST-E143EGSW

C1	R3	260-350	G1	710-910	Y1	140-180
C2					Y2	180-230
C3					Y3	230-300
C4					Y4	300-390
C5			G2	910-1185	Y1	140-180
C6					Y2	180-230
C7					Y3	230-300
C8					Y4	300-390
C9			G3	1185-1540	Y1	140-180
C10					Y2	180-230
C11					Y3	230-300
C12					Y4	300-390

Tolerance on each Intensity bin is +/-11%

### ◆ Wd Rank

		Dominant Wavelength		Unit : nm @ 20mA		
Bin Code	Red		Green		Yellow	
On Tag	Code	Range	Code	Range	Code	Range
D1	RA	615-630	GA	518-523	YA	586-591
D2					YB	591-596
D3			GB	523-528	YA	586-591
D4					YB	591-596

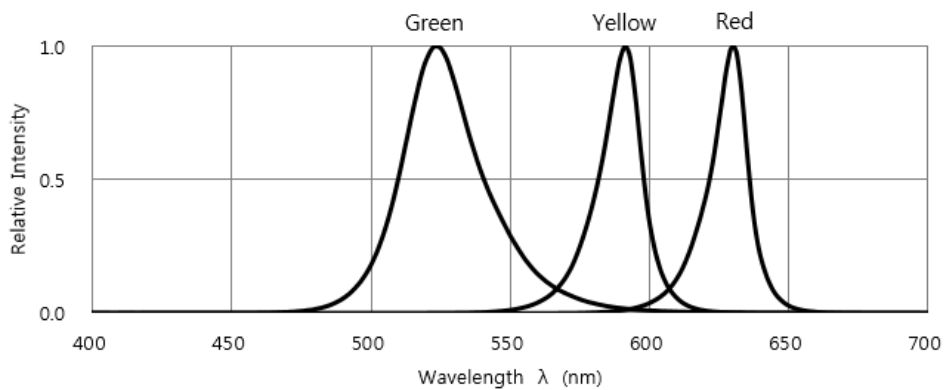
Tolerance for each Dominate Wavelength Bin is +/- 1nm



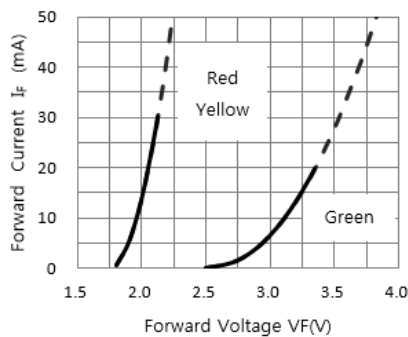
**SMD LED  
LTST-E143EGSW**

**5. Typical Electrical / Optical Characteristics Curves.**

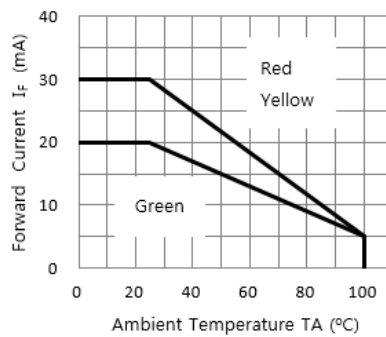
(25°C Ambient Temperature Unless Otherwise Noted)



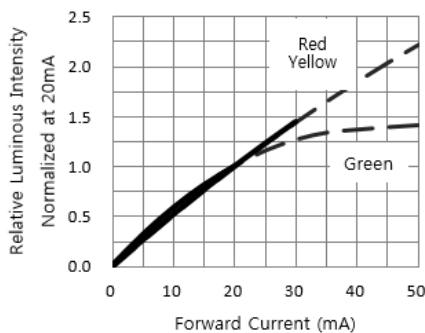
**Fig. 1 RELATIVE INTENSITY VS. WAVELENGTH**



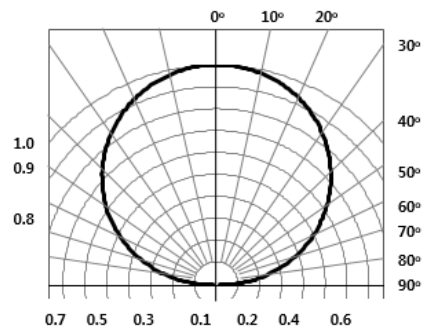
**Fig. 2 FORWARD CURRENT VS. FORWARD VOLTAGE**



**Fig. 3 FORWARD CURRENT VS. DERATING CURVE**



**Fig. 4 RELATIVE LUMINOUS INTENSITY VS. FORWARD CURRENT**



**Fig. 5 Spatial Distribution**

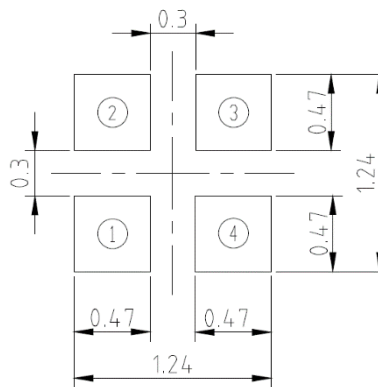
## SMD LED LTST-E143EGSW

### 6. User Guide

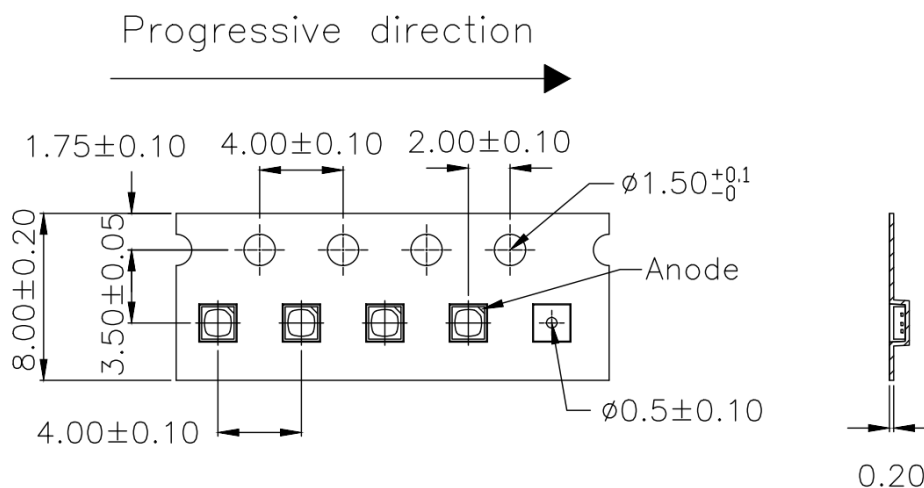
#### 6.1 Cleaning

Do not use unspecified chemical liquid to clean LED they could harm the package. If cleaning is necessary, immerse the LED in ethyl alcohol or isopropyl alcohol at normal temperature for less one minute.

#### 6.2 Recommend Printed Circuit Board Attachment Pad



#### 6.3 Package Dimensions of Tape and Reel

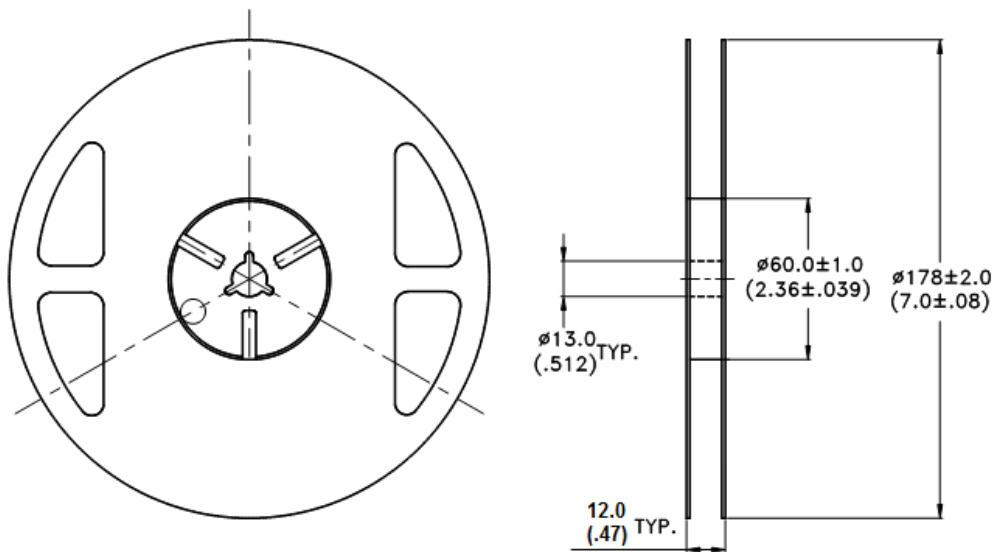


**Note:**

1. All dimensions are in millimeters (inches)

## SMD LED LTST-E143EGSW

### 6.4 Package Dimensions of Reel



#### Notes:

1. Empty component pockets sealed with top cover tape.
2. 7 inch reel 4000 pieces per reel.
3. Minimum packing quantity is 500 pieces for remainders.
4. The maximum number of consecutive missing lamps is two.
5. In accordance with ANSI/EIA 481 specifications.

# SMD LED LTST-E143EGSW

## 7. Cautions

### 7.1 Application

The LEDs described here are intended to be used for ordinary electronic equipment (such as office equipment, communication equipment and household applications). Consult Liteon's Sales in advance for information on applications in which exceptional reliability is required, particularly when the failure or malfunction of the LEDs may directly jeopardize life or health (such as in aviation, transportation, traffic control equipment, medical and life support systems and safety devices).

### 7.2 Storage

The package is sealed:

The LEDs should be stored at 30°C or less and 70%RH or less. And the LEDs are limited to use within one year, while the LEDs is packed in moisture-proof package with the desiccants inside.

The package is opened:

The storage ambient for the LEDs should not exceed 30°C temperature and 60% relative humidity.

It is recommended that LEDs out of their original packaging are IR-reflowed within 168hrs.(Level 3)

For extended storage out of their original packaging, it is recommended that the LEDs be stored in a sealed container with appropriate desiccant, or in a desiccators with nitrogen ambient.

LEDs stored out of their original packaging for more than 168hrs should be baked at about 60 °C for at least 48 hours before solder assembly.

### 7.3 Cleaning

Use alcohol-based cleaning solvents such as isopropyl alcohol to clean the LED if necessary.

### 7.4 Soldering

Recommended soldering conditions:

Reflow soldering		Soldering iron	
Pre-heat	150~200°C	Temperature	300°C Max.
Pre-heat time	120 sec. Max.	Soldering time	3 sec. Max. (one time only)
Peak temperature	260°C Max.		
Soldering time	10 sec. Max.(Max. two times)		

#### Notes:

Because different board designs use different number and types of devices, solder pastes, reflow ovens, and circuit boards, no single temperature profile works for all possible combinations.

However, you can successfully mount your packages to the PCB by following the proper guidelines and PCB-specific characterization.

LITE-ON Runs both component-level verification using in-house **KYRAMX98** reflow chambers and board-level assembly.

The results of this testing are verified through post-reflow reliability testing. Profiles used at LITE-ON are based on JEDEC standards to ensure that all packages can be successfully and reliably surface mounted.

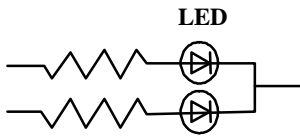
Figure on page3 shows a sample temperature profile compliant to JEDEC standards. You can use this example as a generic target to set up your reflow process. You should adhere to the JEDEC profile limits as well as specifications and recommendations from the solder paste manufacturer to avoid damaging the device and create a reliable solder joint.

## SMD LED LTST-E143EGSW

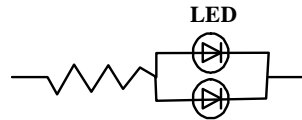
### 7.5 Drive Method

A LED is a current-operated device. In order to ensure intensity uniformity on multiple LEDs connected in parallel in an application, it is recommended that a current limiting resistor be incorporated in the drive circuit, in series with each LED as shown in Circuit A below.

**Circuit model A**



**Circuit model B**



(A) Recommended circuit.

(B) The brightness of each LED might appear different due to the differences in the I-V characteristics of those LEDs.

### 7.6 ESD (Electrostatic Discharge)

Static Electricity or power surge will damage the LED.

Suggestions to prevent ESD damage:

- Use of a conductive wrist band or anti-electrostatic glove when handling these LEDs.
- All devices, equipment, and machinery must be properly grounded.
- Work tables, storage racks, etc. should be properly grounded.
- Use ion blower to neutralize the static charge which might have built up on surface of the LED's plastic lens as a result of friction between LEDs during storage and handling.

ESD-damaged LEDs will exhibit abnormal characteristics such as high reverse leakage current, low forward voltage, or "no lightup" at low currents.

To verify for ESD damage, check for "lightup" and  $V_f$  of the suspect LEDs at low currents.

The  $V_f$  of "good" LEDs should be  $>2.0V@0.1mA$  for InGaP product and  $>1.4V@0.1mA$  for AlInGaP product.

**SMD LED  
LTST-E143EGSW**

**8. Reliability Test**

No.	Test item	Test condition	Reference standard
1	Resistance to soldering heat	Tsld = 260°C, 10sec. 3 times	JEITA ED-4701 300 301
2	Solderability	Tsld=245± 5°C (Lead Free Solder, Coverage ≥ 95% of the dipped surface)	JEITA ED-4701 300 303
3	Thermal Shock	85 ± 5°C ~ -30°C ± 5°C 30min                    30min 100cycles	JEITA ED-4701 300 307
4	Temperature Cycle	-55°C ~ 25°C ~ 100°C ~ 25°C 30min 5min 30min 5min 100cycles	JEITA ED-4701 100 105
5	High Temperature Storage	100°C    1000hrs	JEITA ED- 4701 200 201
6	Low Temperature Storage	-40°C    1000hrs	JEITA ED-4 701 200 202
7	Temperature Humidity Storage	60°C/90%RH 300hrs	JEITA ED-4701 100 103
8	Room temp life test	25°C, IF: Typical current , 100 0hrs	--

**9. Others**

The appearance and specifications of the product may be modified for improvement without prior notice.

**SMD LED  
LTST-E143EGSW**

## 10. Suggested Checking List

### Training and Certification

1. Everyone working in a static-safe area is ESD-certified?
2. Training records kept and re-certification dates monitored?

### Static-Safe Workstation & Work Areas

1. Static-safe workstation or work-areas have ESD signs?
2. All surfaces and objects at all static-safe workstation and within 1 ft measure less than 100V?
3. All ionizer activated, positioned towards the units?
4. Each work surface mats grounding is good?

### Personnel Grounding

1. Every person (including visitors) handling ESD sensitive (ESDS) items wears wrist strap, heel strap or conductive shoes with conductive flooring?
2. If conductive footwear used, conductive flooring also present where operator stand or walk?
3. Garments, hairs or anything closer than 1 ft to ESD items measure less than 100V\*?
4. Every wrist strap or heel strap/conductive shoes checked daily and result recorded for all DLs?
5. All wrist strap or heel strap checkers calibration up to date?

Note: \*50V for InGaN LED.

### Device Handling

1. Every ESDS items identified by EIA-471 labels on item or packaging?
2. All ESDS items completely inside properly closed static-shielding containers when not at static-safe workstation?
3. No static charge generators (e.g. plastics) inside shielding containers with ESDS items?
4. All flexible conductive and dissipative package materials inspected before reuse or recycles?

### Others

1. Audit result reported to entity ESD control coordinator?
2. Corrective action from previous audits completed?
3. Are audit records complete and on file?